



# Telemundo On-Air with ST 2110

Fernando Solanes Director Solutions Engineering

Evertz Microsystems



IP SHOWCASE THEATRE AT IBC – SEPT. 14-18, 2018



## The Goal

- NBCUniversal had plans to build a state-of-the-art facility for its growing Hispanic content business.
- This expansive complex would become the hub to produce more the 3000 hours of content per year.
- It would require a flexible, future proof technology environment for its 1,400 employees






**TELEMUNDO**




3



### The Build

- 13 - Adjustable Studios
- 7 - Production Control Rooms
- 75+ – Edit Stations and Suites

2110 – HD/3G and 4K



4



## The Challenge

Production SDI Router Size is equivalent:

# 12658x13341

**ALL 2110 Sources and Destinations**



5



## The Challenge

Acquisition SDI Router Size is equivalent:

# 12658x2270

**ALL 2110 Sources and Destinations**



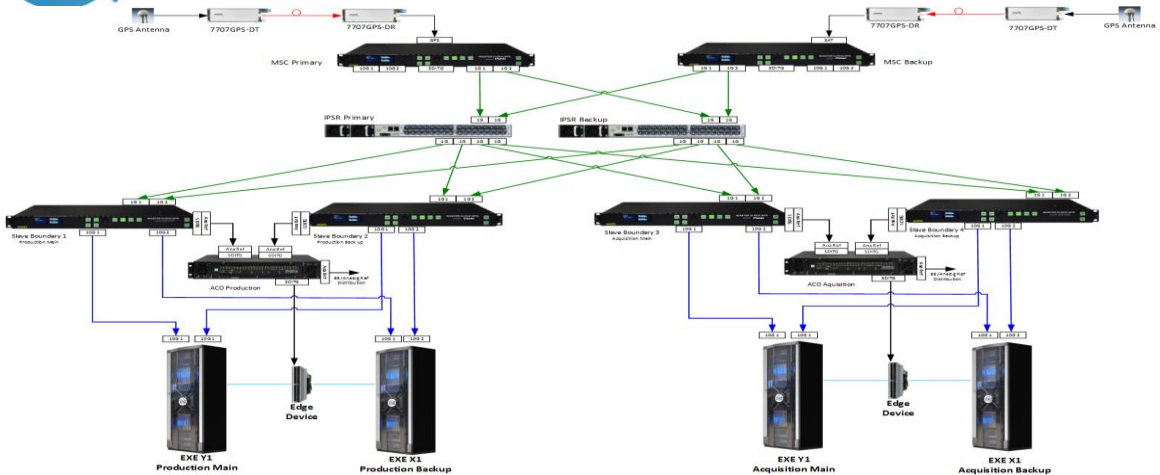
6



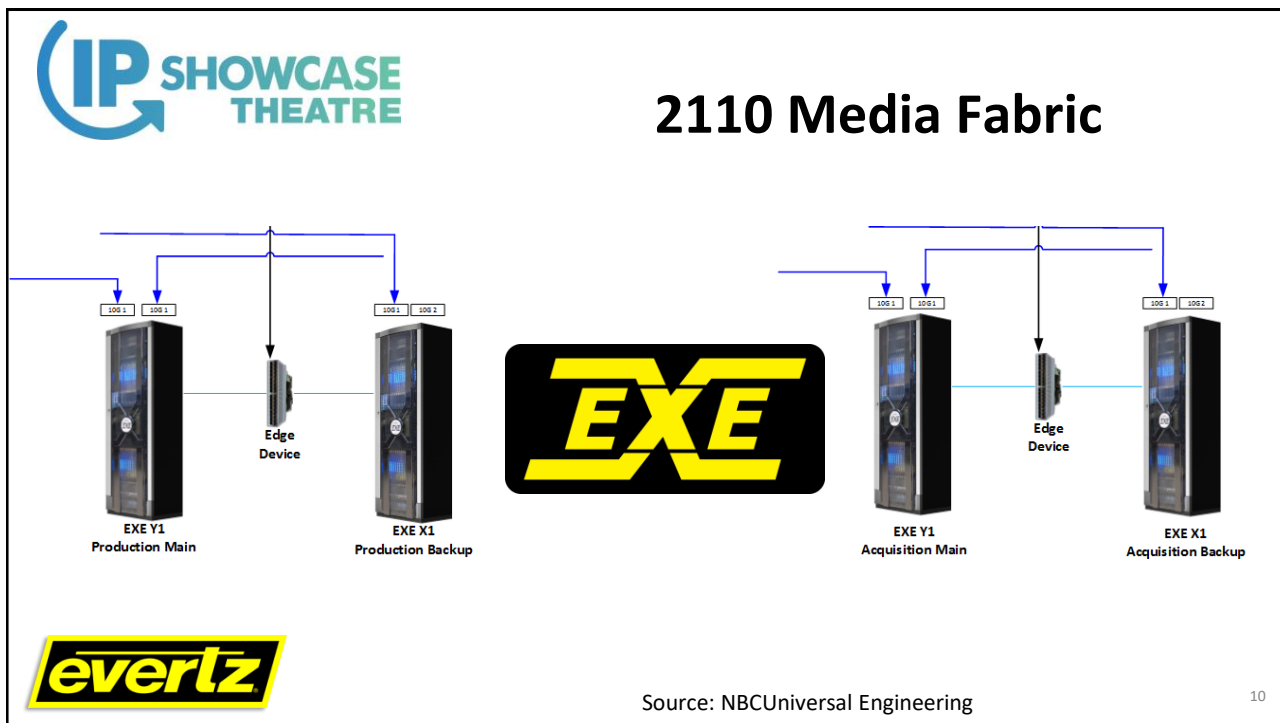
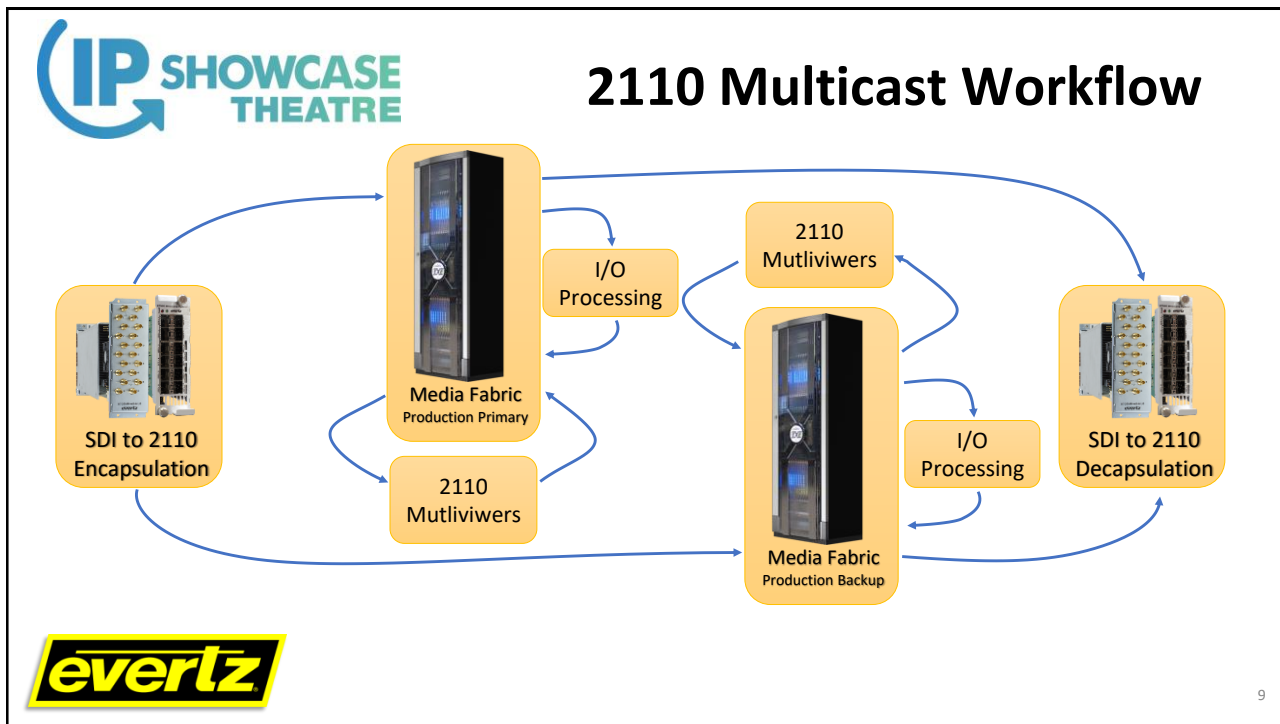
# The Challenge

# 10,000

## 10GbE Network Ports



Source: NBCUniversal Engineering





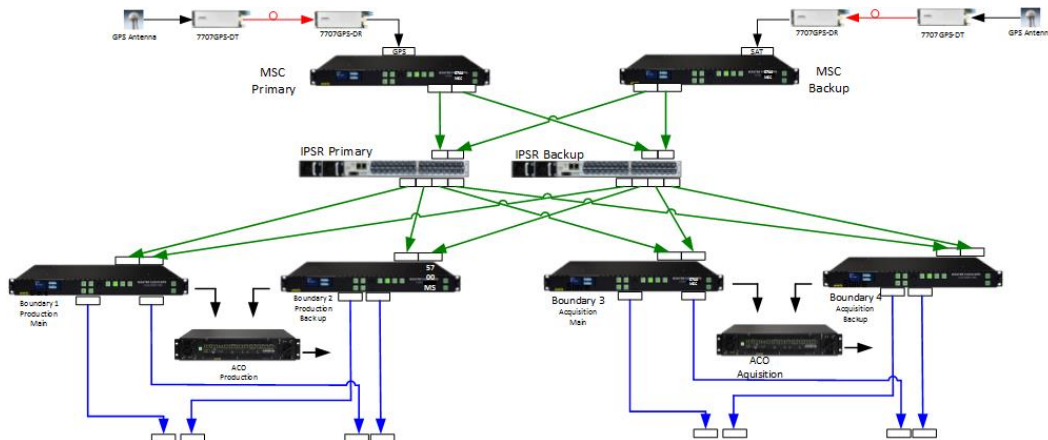
## The Challenge

# 600+

## Devices requiring ST2059 PTP Timing



## The Challenge



Source: NBCUniversal Engineering



The Challenge

# Orchestration

# 150,000

## 2110 Multicast Flows

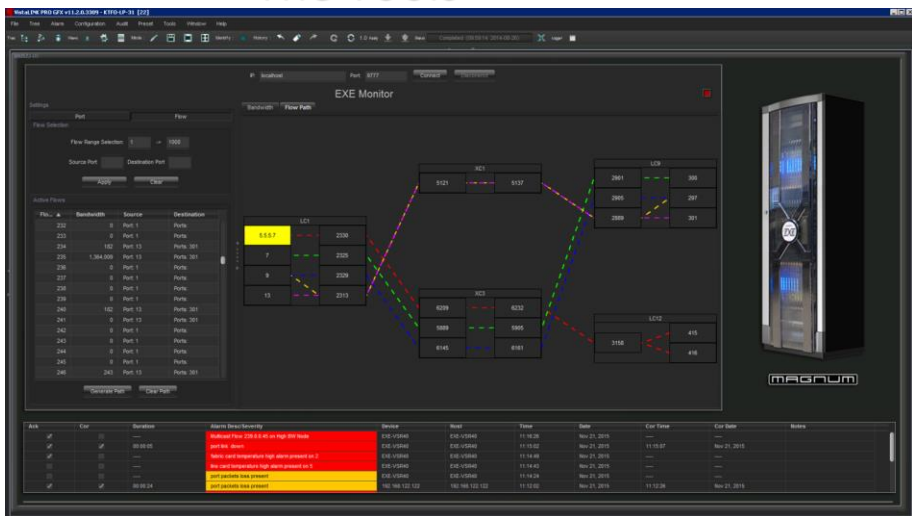




# The Tools



# The Tools







The Success

# 9 Months From Pen to On-Air



17



The Lessons

- Importance of Interoperability
- Importance of Customer Knowledge



18



# Thank You

Fernando Solanes, Evertz Microsystems  
fsolanes@evertz.com



IP SHOWCASE THEATRE AT IBC – SEPT. 14-18, 2018